



RENEET TECHNOLOGY

"Your Requirement, Our Commitment to Deliver."

PRODUCT CATALOGUE



Reneet Technology.
Mumbai, India.
www.reneet.co.in

PRODUCT CATALOUGE



Reneet Technology was Established in year 2015 with the aim of catering to the growing demands of Industrial Fasteners , OEM Parts , Heater Parts.

Today Reneet Technology is an leading supplier of wide range of products globally including Precision Fasteners , Turned Parts, Forging Products, Casting Products, Rubber parts, Sheet metal components, Coil Heater, Conical Micro Heater, Nozzle Heater, SS Sleeve Coil Heater , Cartridge Heaters , Disc Heater and Customized Heaters complying to various National and International standards.

We have a team of young visionaries who endeavor for excellence in every aspect . We strongly believe in our core values and are always in the pursuit of success along the lines of ethical business practices.

Over the past few years Reneet Technology has provided immense support to this industry In India and has built various congenial customer relations.

We Supply best quality materials from our end to meet the requirement of our customers.

Our unique selling proposition is that alongside the standard sizes available, we even provide the clients the best Customized solutions to cater exactly to their needs.

We provide customized products to the customers on the basis of drawing and sampling to exactly fit to a customer's need.

As we move forward in to the 21st century Reneet Technology will continue to identify new opportunities that will enable it to increase its sales as well as ensure it's current recognition into marketplace.

Kindly visit us @ www.reneet.co.in

Email us - info@reneet.co.in; sales@reneet.co.in ; reytechnology20@gmail.com

*Contact US :- **+91-9021667420***

SCREW'S/ BOLT'S:

DESCRIPTION	SIZE RANGE	MATERIAL	DIN	IS
ALLEN GRUB SCREW 	D(3MM TO 6MM) L(4MM TO 50MM)	SS 304, SS 316	916	6094-1981(CP)
SLOTTED COUNTERSUNK HEAD SCREW 	D(2MM TO 12MM) L(4MM TO 100MM)	SS 304, SS 316	963	1365-1978
COUNTERSUNK PHILIPS SCREW 	D(2MM TO 12MM) L(4MM TO 100MM)	SS 304, SS 316	-	7485-1985
PAN PHILIPS SCREW/BOLT 	D(2MM TO 10MM) L(4MM TO 100MM)	SS 304, SS 316	7985	7483-1985

SCREW'S/ BOLT'S:

DESCRIPTION	SIZE RANGE	MATERIAL	DIN	IS
SLOTTED CHEESE HEAD SCREW/BOLT 	D(2MM TO 10MM) L(4MM TO 100MM)	SS 304, SS 316	84	1366-1982
ALLEN CSK SCREW/BOLT 	D(2MM TO 12MM) L(4MM TO 100MM)	SS 304, SS 316	7991	6761-1972
ALLEN CAP BOLT 	D(3MM TO 20MM) L(6MM TO 150MM)	SS 304, SS 316	916	-
HEX BOLT 	D(3MM TO 24MM) L(10MM TO 200MM)	SS 304, SS 316	933	1364-1992

NUT'S:

DESCRIPTION	SIZE RANGE	MATERIAL	DIN	IS
DOME NUT 	D(4MM TO 24MM)	SS 304, SS 316	1587	7790
FLANGE NUT 	D(4MM TO 12MM)	SS 304, SS 316	6923	-
NYLOCK NUT 	D(3MM TO 16MM)	SS 304, SS 316	982	7002-1972
CSK HEX NUT/ LOCK NUT 	M5 TO M24	SS 304, SS 316	439	1364

NUT'S / WASHER'S :

DESCRIPTION	SIZE RANGE	MATERIAL	DIN	IS
<p>HEX NUT</p> 	D(2MM TO 24MM)	SS 304, SS 316	934	1364 P3-2002
<p>PLAIN WASHER / CUPWASHER</p> 	M3 TO M24 & 1/8" TO 1" THICK – 1.2MM TO 3MM	SS 304, SS 316	125	2016-1967
<p>SPRING WASHER</p> 	M3 TO M24 & 1/8" TO 1" SQUARE AND FLAT	SS 304, SS 316	125	2016-1967
<p>DISC SPRING WASHER</p> 	A6 TO A140 MM	STAINLESS STEEL	DIN 2093	

PINS :

DESCRIPTION	SIZE RANGE	MATERIAL	DIN	IS
<p>DOWEL PIN</p> 	D(3 MM TO 12MM)	SS 304, SS 316	7	
<p>TAPPER PIN</p> 	M3 TO M10	SS 304, SS 316	1	
<p>CLEVIS PIN</p> 	DIA (10MM TO 20MM)	SS 304, SS 316	1443	

PLUGS :

DESCRIPTION	SIZE RANGE	MATERIAL	DIN
HEXAGON SOCKET SCREW PLUG 	M8X1 TO M24X1.5 G3/4" TO G2"	SS 304, SS 316	908
SCREW PLUGS WITH COLLAR AND OUTER HEXAGON 	M8X1 TO M24X1.5 G3/4" TO G2	SS 304, SS 316	910
HEXAGON HEAD SCREW PLUG 	M8X1 TO M24X1.5 G3/4" TO G2	SS 304, SS 316	7604

RINGS AND LOCK NUTS :

DESCRIPTION	SIZE RANGE	MATERIAL	DIN
ADJUSTING RING 	A8 TO A100	SS 304, SS 316	705
SLOTTED LOCK NUT 	M10 TO M60	SS 304, SS 316	1804
LOCKNUT 	M10 TO M110	SS 304, SS 316	981

SHAFTS AND SLEEVES:

DESCRIPTION	SIZE RANGE	MATERIAL
<p data-bbox="382 358 504 389">SHAFTS</p> 	<p data-bbox="923 572 1277 611">D(20mm to 100mm)</p>	<p data-bbox="1431 551 1827 629">STAINLESS STEEL , ALLOYS & Duplex</p>
<p data-bbox="324 855 562 876">SHAFT SLEEVES</p> 	<p data-bbox="929 1068 1271 1106">D(15MM TO 100MM)</p>	<p data-bbox="1431 1046 1827 1125">STAINLESS STEEL , ALLOYS & Duplex</p>




RUBBER PARTS:

DESCRIPTION	SIZE RANGE	POLYMER
<p>WASHERS</p> 	AS PER CUSTOMER REQUIRMENTS	EPDM,SILICON & BUTYL
<p>GASKETS</p> 	AS PER CUSTOMER REQUIRMENTS	EPDM,SILICON & BUTYL
<p>BELLOWS</p> 	AS PER CUSTOMER REQUIRMENTS	EPDM,SILICON & BUTYL




RUBBER PARTS:

DESCRIPTION	SIZE RANGE	POLYMER
<p>RUBBER SEAL</p> 	AS PER CUSTOMER REQUIRMENTS	EPDM,SILICON & BUTYL
<p>ANTI VIBRRATION RUBBER MOUNTS</p> 	AS PER CUSTOMER REQUIRMENTS	NR / SBR / AS PER REQUIRMENT
<p>EPDM O RING</p> 	3 TO 10 MM	EPDM,SILICON & BUTYL

SHEET METAL :

DESCRIPTION	SIZE RANGE	MATERIAL
<p data-bbox="374 429 504 458">CLAMPS</p> 	<p data-bbox="826 529 1354 558">AS PER CUSTOMER REQUIRMENTS</p>	<p data-bbox="1479 508 1750 622">STAINLESS STEEL , ALUMINUM AND CARBON STEEL</p>
<p data-bbox="374 739 504 768">CIRCLIPS</p> 	<p data-bbox="826 839 1354 868">AS PER CUSTOMER REQUIRMENTS</p>	<p data-bbox="1479 796 1750 911">STAINLESS STEEL, ALUMINUM AND CARBON STEEL</p>
<p data-bbox="233 1046 649 1075">AUTOMOTIVE PRESS PARTS</p> 	<p data-bbox="826 1168 1354 1196">AS PER CUSTOMER REQUIRMENTS</p>	<p data-bbox="1479 1125 1750 1239">STAINLESS STEEL , ALUMINUM AND CARBON STEEL</p>

SPECIAL PARTS :

DESCRIPTION	SIZE RANGE	MATERIAL
<p>FLAT RIVET NUTS</p> 	AS PER CUSTOMER REQUIRMENTS	STAINLESS STEEL , ALUMINUM AND CARBON STEEL
<p>CHAIN</p> 	AS PER CUSTOMER REQUIRMENTS	STAINLESS STEEL, ALUMINUM AND CARBON STEEL
<p>BUSH</p> 	AS PER CUSTOMER REQUIRMENTS	STAINLESS STEEL , ALUMINUM AND CARBON STEEL

Fasteners



RENEET
TECHNOLOGY

"Your Requirement, Our Commitment to Deliver."



Fasteners



Special parts



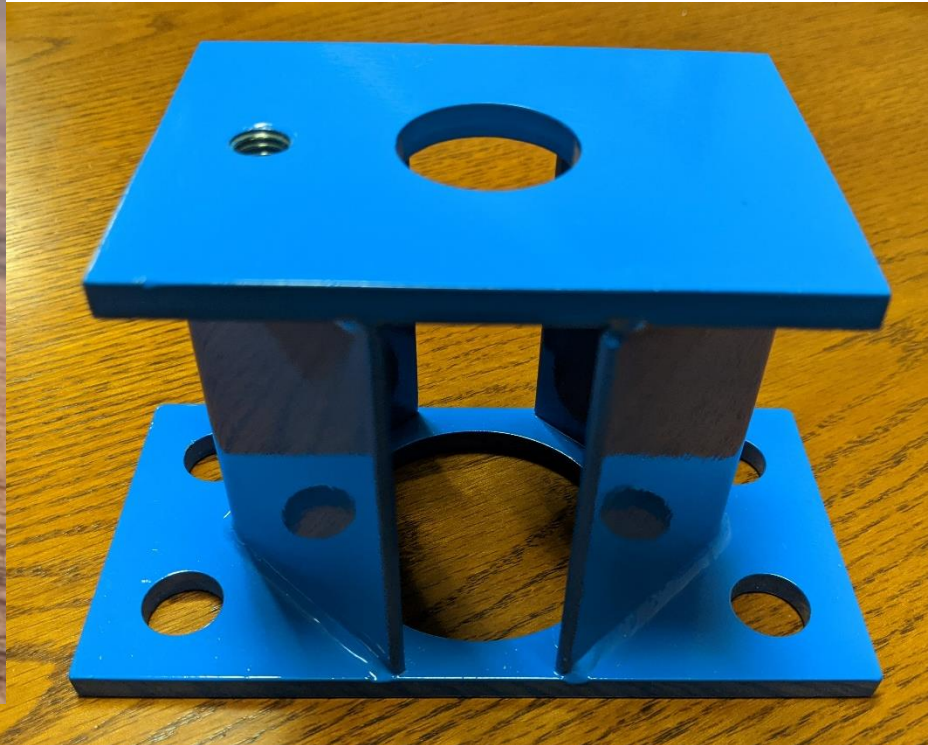
Sheet Metal parts



Sheet Metal parts



Fabricated parts



Brass parts



CASTING PARTS



RENEET
TECHNOLOGY

"Your Requirement, Our Commitment to Deliver."



CASTING PARTS



RENEET
TECHNOLOGY

"Your Requirement, Our Commitment to Deliver."



CASTING PART



FORGING AND RING ROLLING



Coil HEATER PARTS



Micro Coil Heater Parts



SS Sleeve Coil Heater Parts



Micro Coil Heater Parts



Mini and nozzle Coil Heater Parts



Copper Disc Heater Parts



L Type Cartridge Heater



Pencil Cartridge Heater



Square Cartridge Heater

